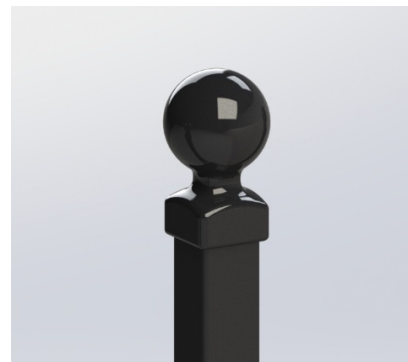
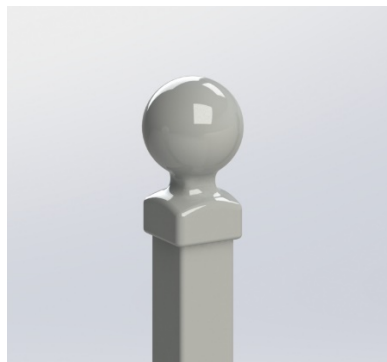
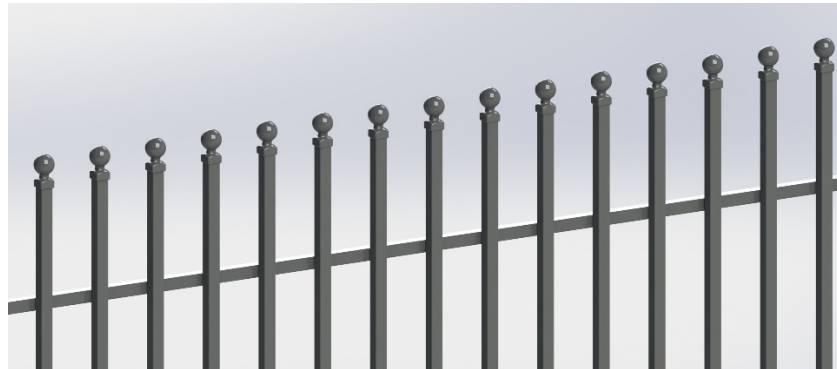
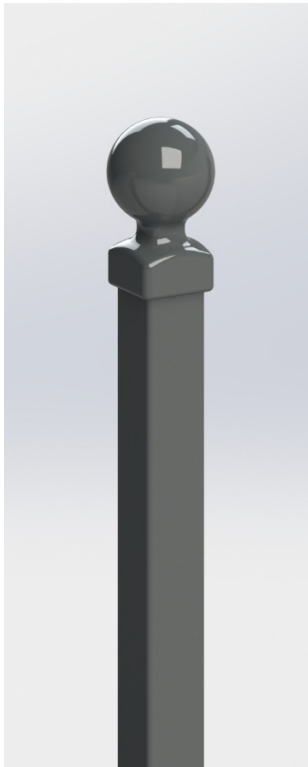


## WZ1 fence arrowhead for 20x20 profile posts



Decorative element for 20x20 profile posts of 1.2 mm (+/- 0,15mm) thick wall. The system allows the arrowheads to be mounted without welding - particularly cumbersome on a galvanised profile post, and mounted directly on the unworked profile post after cutting. The assembly only requires the end to be "hammered" into the profile post using a special cap.

Type of paint	acrylic
Available colours	- black matte RAL9005 - graphite matte RAL7016 - light grey matte RAL7040 - other per request
Assembly method	hammering into the 20x20 profile post of 1.2 mm (+/- 0,15mm) thick wall (using WZM mounting tool)
Element weight	0.04 kg

Dimensions	height: 83 mm width: 33 mm depth: 33 mm height above the profile post after assembly: 43 mm
Material	modified technical material
Other	weather-resistant